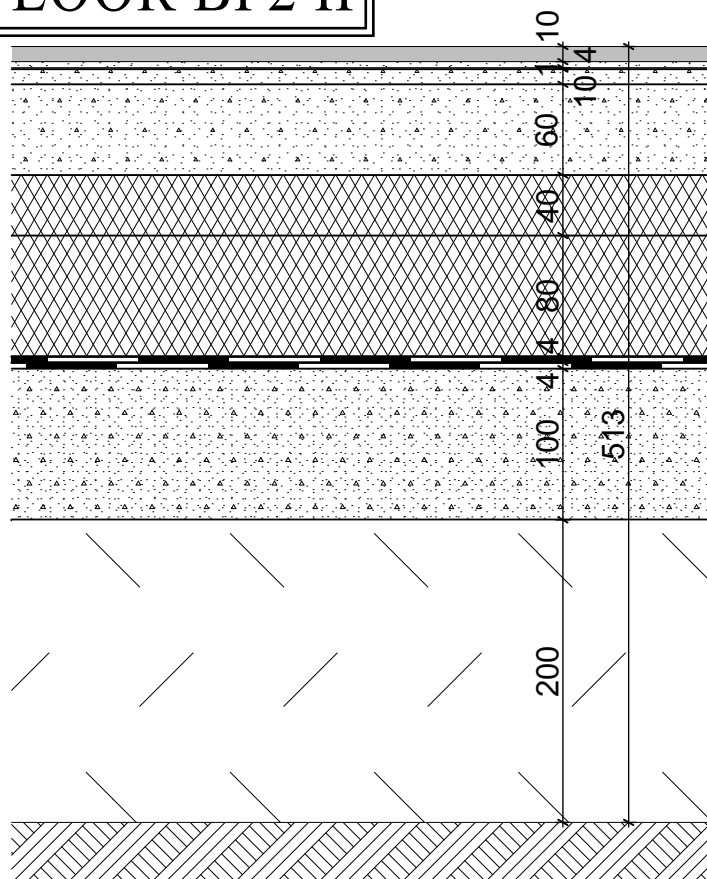


# BATHROOM FLOOR BF2 II

SC 1:5



## COMPOSITION OF FLOOR IN 1<sup>st</sup> ABOVE GROUND FLOOR

N	FUNCTION	MATERIAL SPECIFICATION	STABILIZATION	THICKNESS
9	INSULATION	ACOUSTIC INSULATION stone wool, thermal resistance R 1.10 m <sup>2</sup> *K/W, coefficient of thermal conductivity $\lambda_u$ 0.035W/m*K, fire reaction class A1, diffusion resistance factor $\mu$ 1, density 40 kg/m <sup>3</sup>	-	40
10	THERMAL INSULATION	THERMAL INSULATION EPS polystyrene, thermal resistance R 5.80 m <sup>2</sup> *K/W, coefficient of thermal conductivity $\lambda_u$ 0.034W/m*K, fire reaction class E, compressive strength 250 MPa, diffusion resistance factor $\mu$ 100	-	80
11	WATERPROOFING/ ANTI-RADON	BITUMEN SHEETS modified SBS, top layer separation spill, core layer glass textile, bottom layer PE foil, coefficient of thermal conductivity $\lambda_u$ 0.21W/m*K	melted	2x4
12	FOUNDATION PLATE	CONCRETE PLATE + KARI WIRE MESH concrete C20/25 XC1, consistancy S3, with reinforcement mesh diameter 4/150	-	100
13	BASE	COMPRESSED SOIL class 6, Rdt 500 kPa	-	200

### NOTES:

- corners have to be treated by butyl tape, width 100 mm before placing of the adhesive